

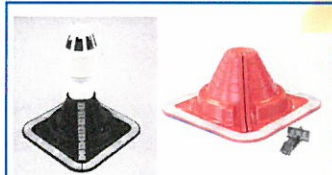
Since the tragic bush fires that ripped through Victoria, the government has introduced a new residential building standard.

All new homes built or renovated in Australia must undergo a bush fire attack level (BAL) assessment.

All building approvals issued in designated bushfire prone zones **MUST** build to BAL 12.5 standards as a minimum requirement.

Why is the BAL rating so important?

All building inspectors now have a duty to inspect all fitted roof flashings. An inspector carries the right to refuse approval if a non BAL rated flashing is used.



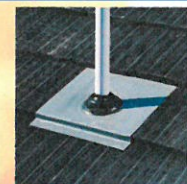
Dektite Combo Range

- Black EPDM Dektites in this range now carry a BAL rating of 12.5.
- Red Silicone Dektites in this range now carry a BAL rating of 29.



Dektite Premium Range

- Black EPDM Dektites in this range now carry a BAL rating of 12.5.
- Red Silicone Dektites in this range now carry a BAL rating of 29.



Black EPDM Nu Lead

- Black EPDM Dektites in this range now carry a BAL rating of 12.5.

Bushfire Attack Level (BAL)	Description of predicted Bushfire Attack and levels of exposure
BAL-low	There is not sufficient risk to warrant exposure
BAL-12.5	Ember attack
BAL-19 to 29	Increasing levels of ember attack and burning debris ignited by windborne embers together with increasing heat

Play it safe, do it right and use Deks Dektite - the only DEKTITE

